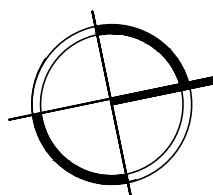
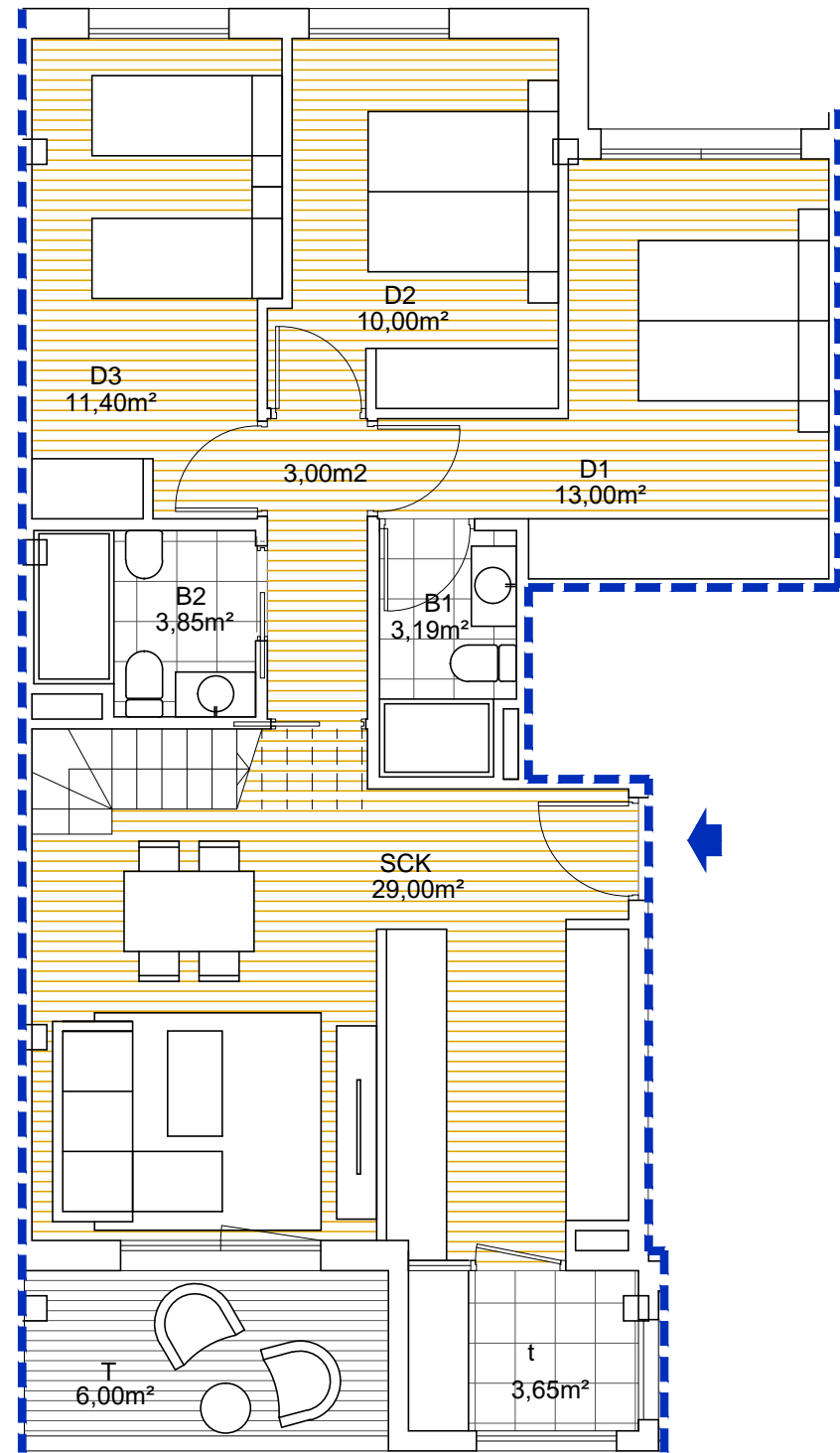


PLANTA TERCERA

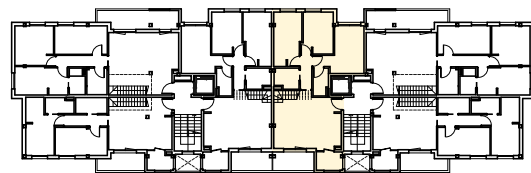
| | |
|----------------------|----------------------|
| PORTAL | 2 |
| PLANTA | P3ª+Dúplex |
| LETRA | D |
| Salón-Comedor-Cocina | 29,00 m ² |
| Dormitorio principal | 13,00 m ² |
| Dormitorio 2 | 10,00 m ² |
| Dormitorio 3 | 11,40 m ² |
| Baño 1 | 3,19 m ² |
| Baño 2 | 3,85 m ² |
| Distribuidor | 3,00 m ² |
| Tendedero | 3,85 m ² |
| SUP. ÚTIL | 77,09 m ² |
| SUP. CONSTRUIDA | 89,45 m ² |
| Terraza | 6,00 m ² |
| Terraza en cubierta | 30,00 m ² |
| SUP. ÚTIL EXTERIOR | 36,00 m ² |



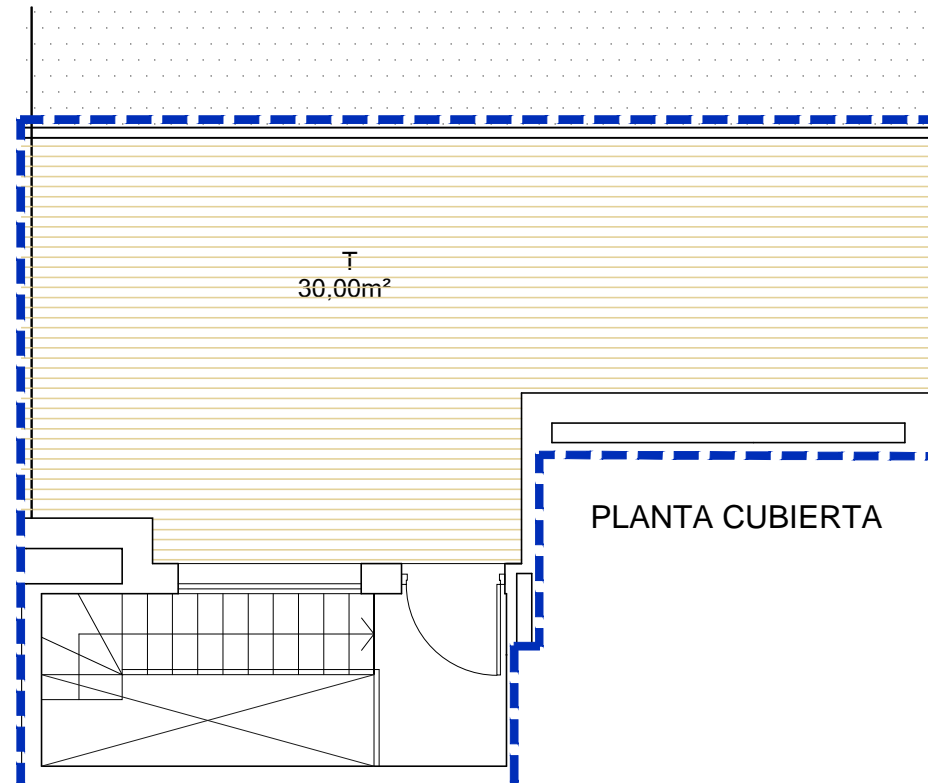
| | | | |
|-----------|----------------------------|--|-------------|
| PROYECTO: | EDIFICIO DE 18 VIVIENDAS | SITUACIÓN: | 3D+2WC |
| | FICHAS COMERCIALES | | |
| PLANTA: | Portal 02_Planta Tercera_D | VENANCIOS PARCELA H GETXO (Bizkaia) | P3 D |



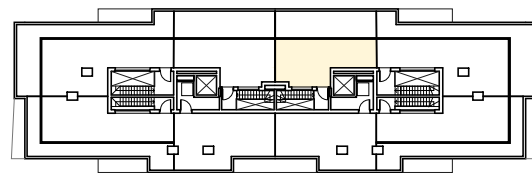
PLANTA TERCERA



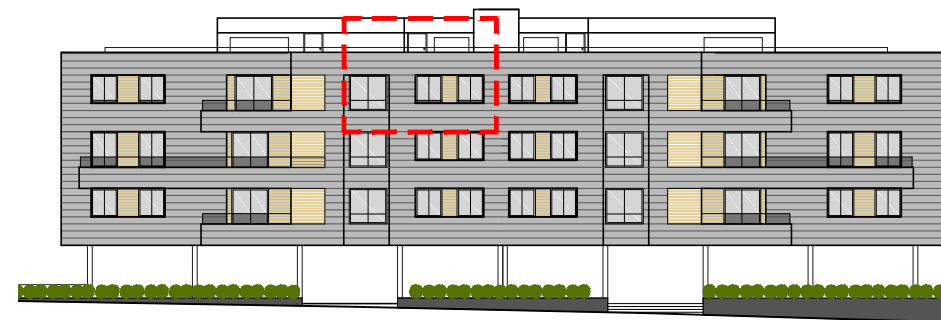
PLANTA TERCERA



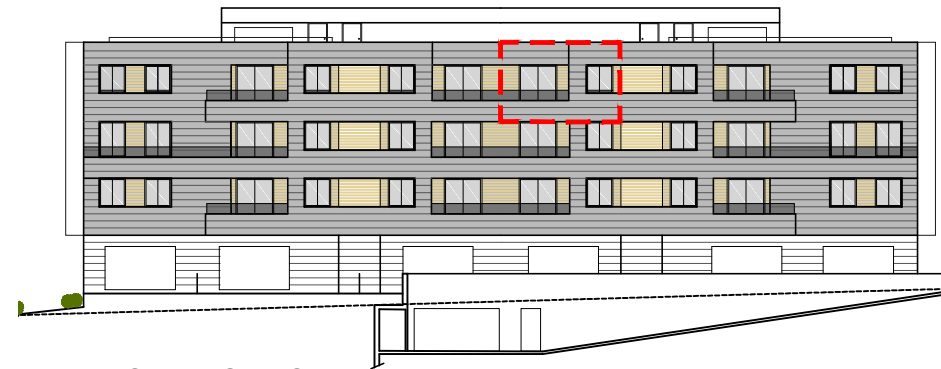
PLANTA CUBIERTA



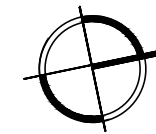
PLANTA CUBIERTA



ALZADO PRINCIPAL



ALZADO TRASERO



| | |
|----------------------|------------|
| PORTAL | 2 |
| PLANTA | P3º+Dúplex |
| LETRA | D |
| Salón-Comedor-Cocina | 29,00 m² |
| Dormitorio principal | 13,00 m² |
| Dormitorio 2 | 10,00 m² |
| Dormitorio 3 | 11,40 m² |
| Baño 1 | 3,19 m² |
| Baño 2 | 3,85 m² |
| Distribuidor | 3,00 m² |
| Tendedero | 3,85 m² |
| SUP. ÚTIL | 77,09 m² |
| SUP. CONSTRUIDA | 89,45 m² |
| Terraza | 6,00 m² |
| Terraza en cubierta | 30,00 m² |
| SUP. ÚTIL EXTERIOR | 36,00 m² |